

4

3

2

1

D

D

C

C

B

B

A

A

4

3

2

1

D

D

C

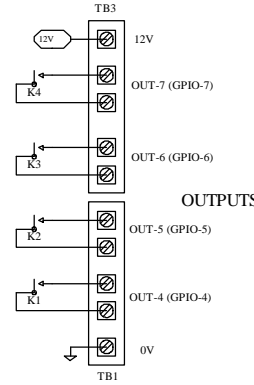
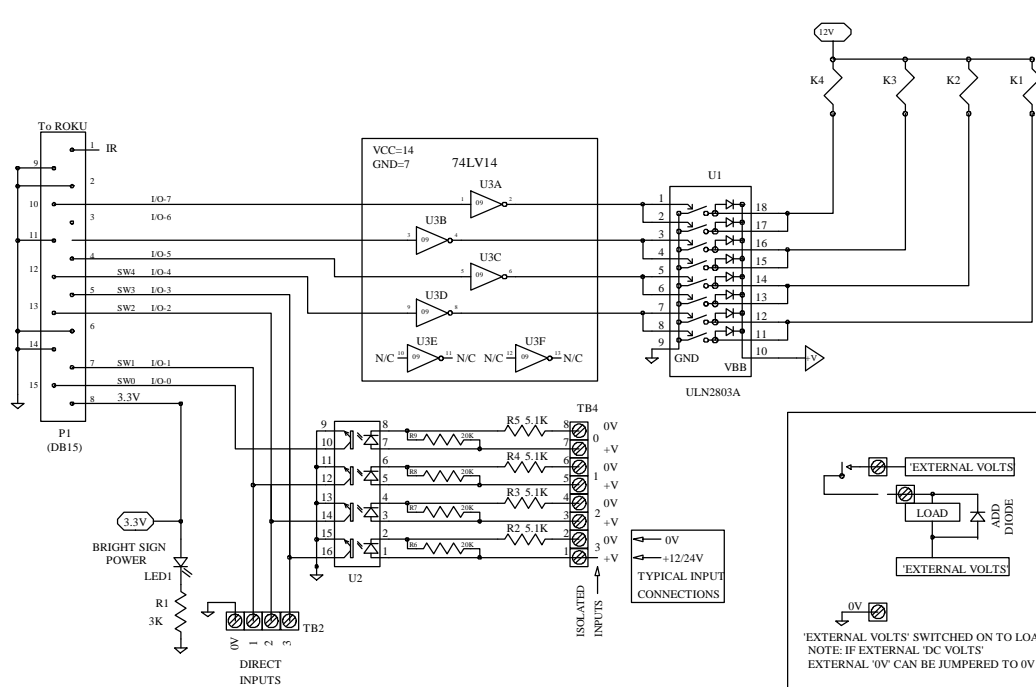
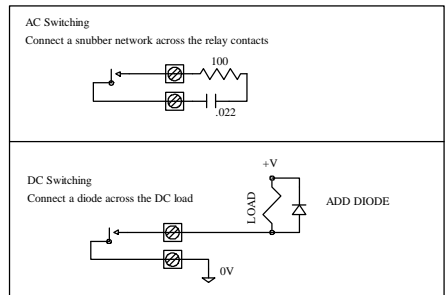
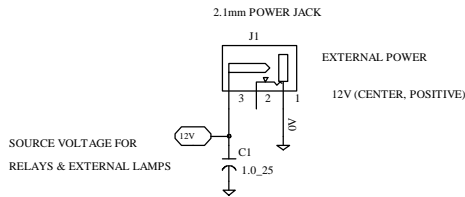
C

B

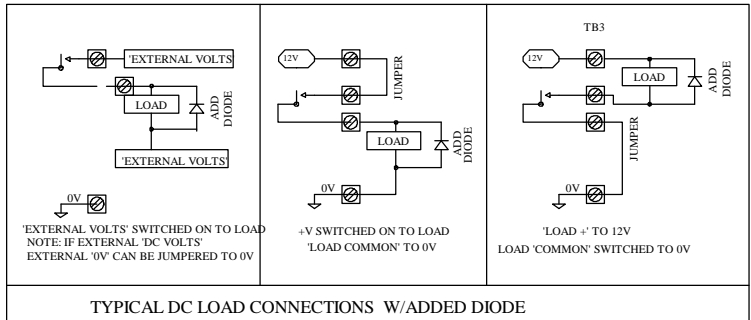
B

A

A



NOTE: OPTO-COUPLER IS OPEN COLLECTOR (LIKE A NORMALLY OPEN SWITCH)
 THE OPTO-COUPLERS CAN BE PARALLELED WITH EXTERNAL SWITCHES SO THAT DIRECT INPUT CAN BE DONE WITHOUT DISCONNECTING THE OPTO-COUPLER



!! INVERTED GPIO CONTROL SIGNALS !!
 NOTE: THIS REV2 BOARD USES INVERTED CONTROL PINS
 SET THE GPIO = LOW, TO TURN ON THE RELAY

Comp.	HMS ELECTRONICS	
no.	HD_40PTO_4R_R2S.DBF	
name	ROKU HD INTERFACE BOARD 4 ISOLATED INPUTS AND OUTPUTS	
Org	10-08-13	Rev 2.0
Engineer	Richard Harkey	HMS Electronics

4

3

2

1