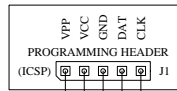


4

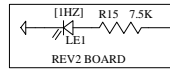
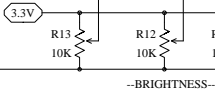
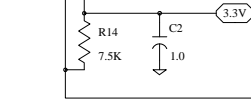
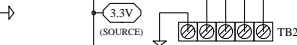
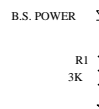
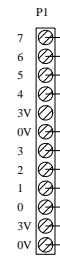
3

2

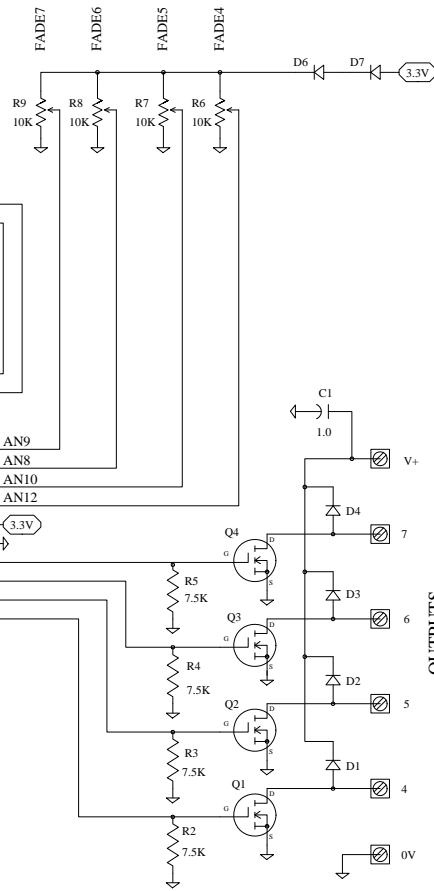
1



PHOENIX CONNECTOR



18F25K22 U1



OUTPUT BRIGHTNESS & FADE ADJUSTABLE!

Comp.	HMS ELECTRONICS	
no.	PH_4X4_BF_S.DBF	
name	GPIO 4 INPUT, 4 OUTPUTS W/BRIGHTNESS & FADE	
Org	02-14-2019	Rev 1
Engineer	Richard Harkey	HMS Electronics

4

3

2

1